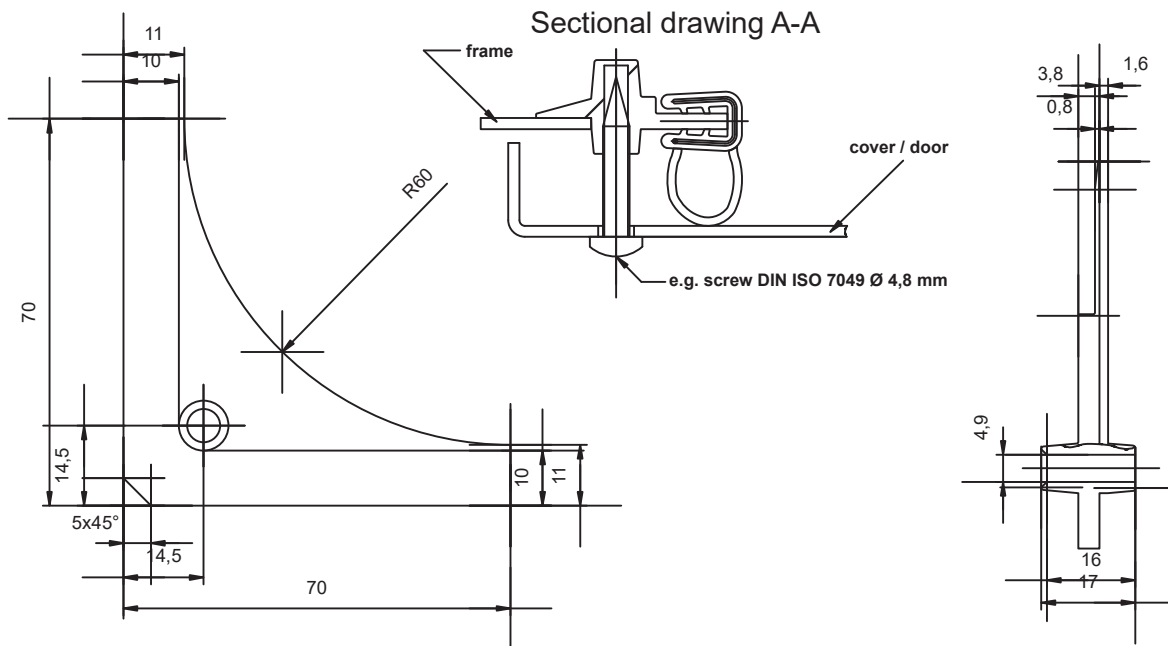


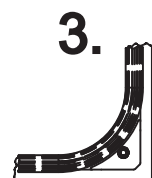
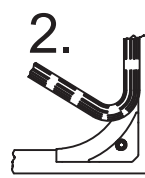
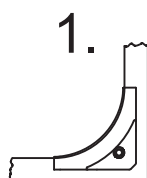
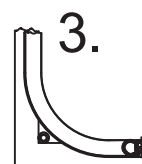
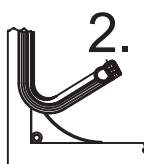
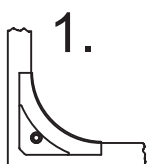
Corner radius for self locking sealing profiles

The corner radius is used to assemble self locking sealing profiles to 90° inside corners. It creates a radius and enables an easier installation.

- The corner radius is fixed to the flange of the body profile by the self locking sealing profile and kept in position.
- No welding and grinding of junction plates due to the corner radius.
- The corner radius gets inserted and installed with the sealing profile after painting the frame.
- Due to the integrated screw connector at the inserted corner radius, no additional hardware is required.



Operation work flow when assembling



Article-reference	Material
K2 103	PA6 30GF black